

## Installing System Center Virtual Machine Manager 2016 (SCVMM 2016)

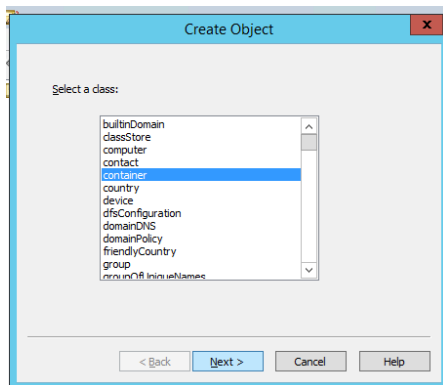
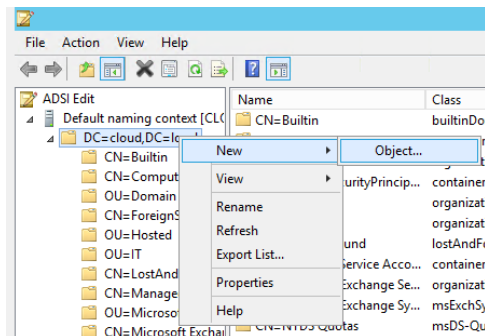
Inside this article we will cover the installation of SCVMM in a cluster environment, let's have a look on the required pre-requisites for installing SCVMM 2016.

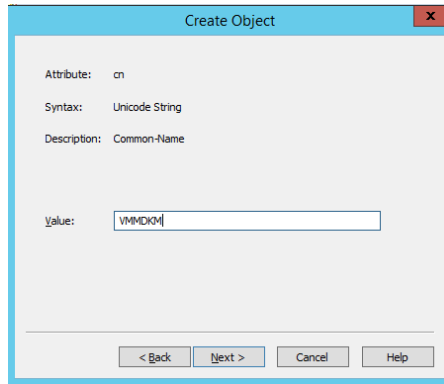
### Prerequisites

1. Create the following Service Accounts in to your AD:
  - DOMAIN\VMM-SVC (SCVMM Service Account)
  - DOMAIN\ SCVMM-AdminAction (SCVMM Service Account for Adding Hyper-V Hosts in SCVMM 2016)
  - DOMAIN\SCVMM-Admins (SCVMM Global Security Group)

**Note:** Add DOMAIN\VMM-SVC, DOMAIN\ SCVMM-AdminAction and Domain Administrators to DOMAIN\SCVMM-Admins Security Group

  - Distributed Key Management for SCVMM:
    - In Active Directory

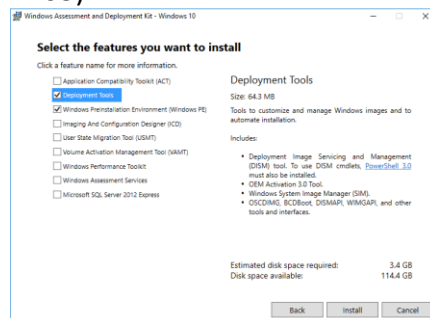




Click Next and Finish

Value: CN=VMMDKM,DC=cloud,DC=local

2. SQL Server Instance (For installing SCVMM 2016)
3. Run the following on SCVMM 2016 Servers to have an error free installation)
  - a. Windows Deployment KIT (adksetup.exe - Windows 10 version 1703)

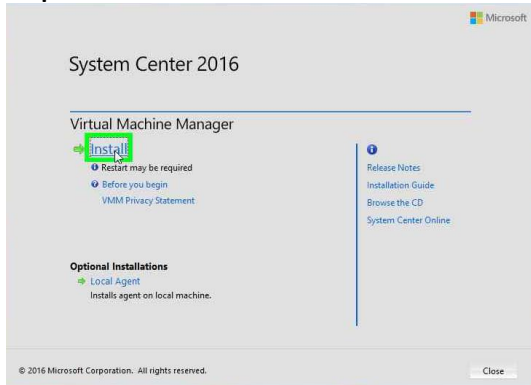


- b. Microsoft ODBC Driver 11 for SQL Server (msodbcsql)
  - c. Microsoft Command Line Utilities 13 for SQL Server (
4. Assuming you have two (2) VMs for deploying highly available SCVMM 2016.
  - a. Install and Configure the Failover Cluster Manager in both the VMs on which you desire to install SCVMM prior running the setup.

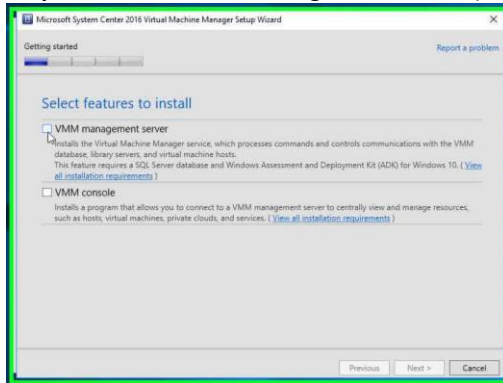
## Installing System Center Virtual Machine Manager 2016 in a cluster environment.

### SCVMM First Server

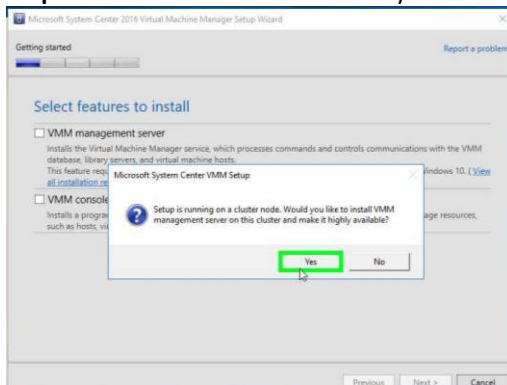
#### Step 1 Click on "Install"



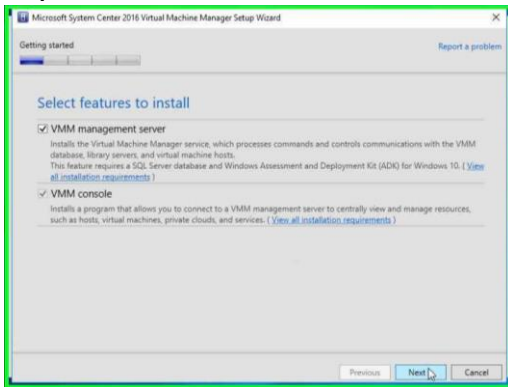
#### Step 2 Click on "VMM management server (check box)"



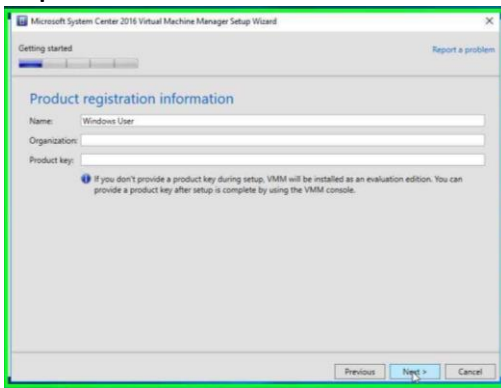
#### Step 3 Click on "Yes" in "Microsoft System Center VMM Setup"



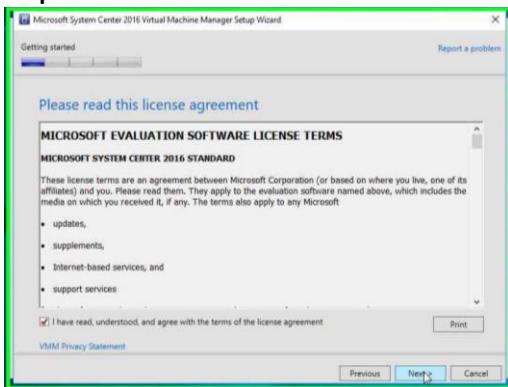
#### Step 4 Click on "Next"



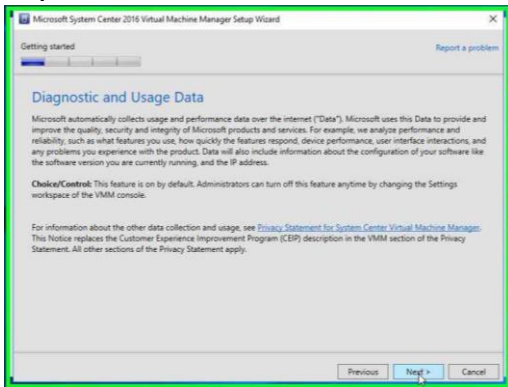
#### Step 5 Click on "Next"



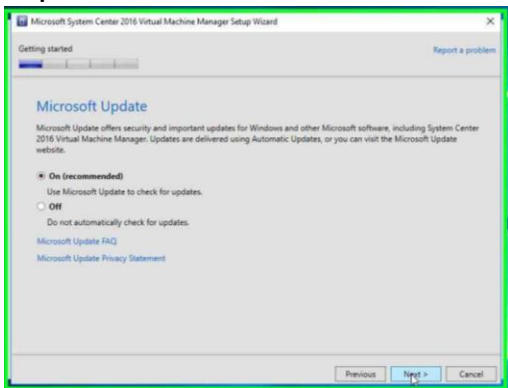
#### Step 6 Click on "Next"



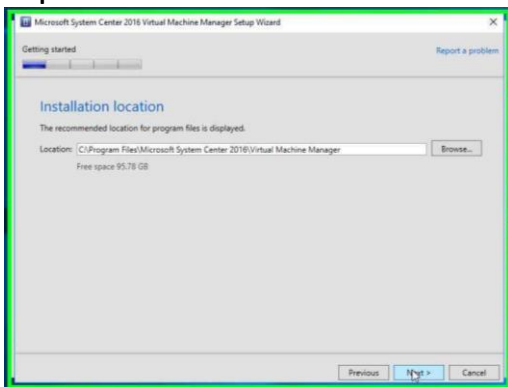
### Step 7 Click on "Next"



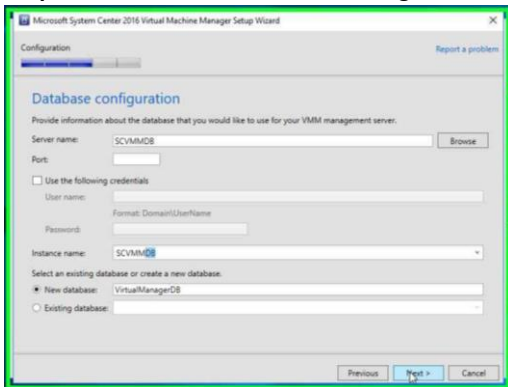
### Step 8 Click on "Next"



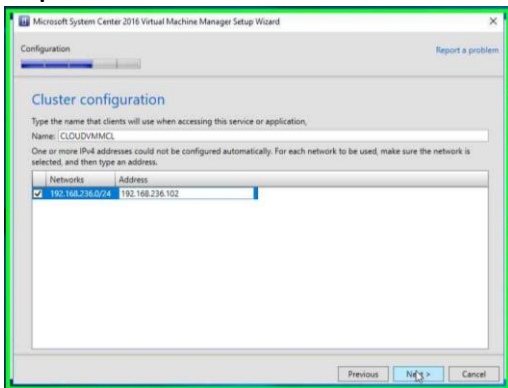
### Step 9 Click on "Next"



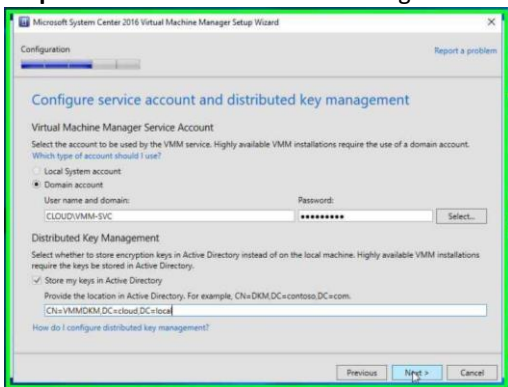
**Step 10** Click on "Next" after entering the SQL Server details



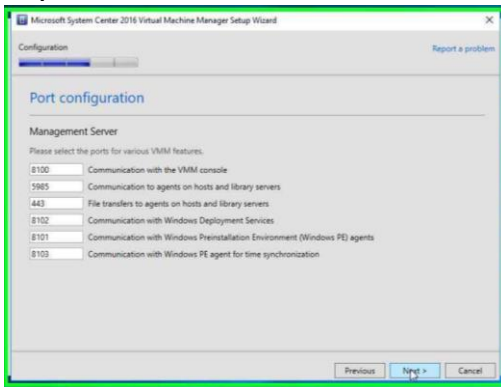
**Step 11** Click on "Next"



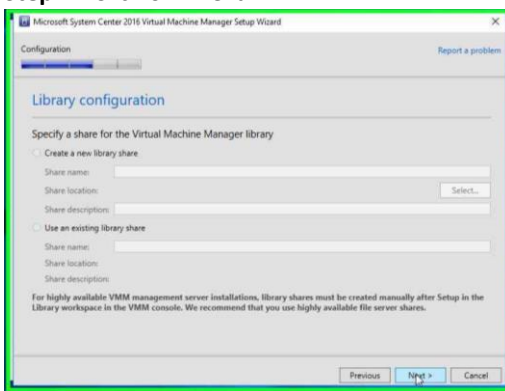
**Step 12** Click on "Next" after entering the SCVMM service account details as shown in the below snapshot



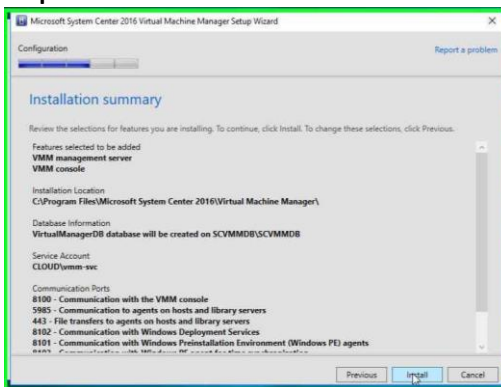
### Step 13 Click on "Next"



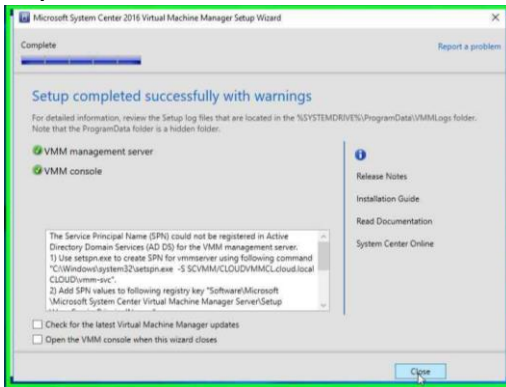
### Step 14 Click on "Next"



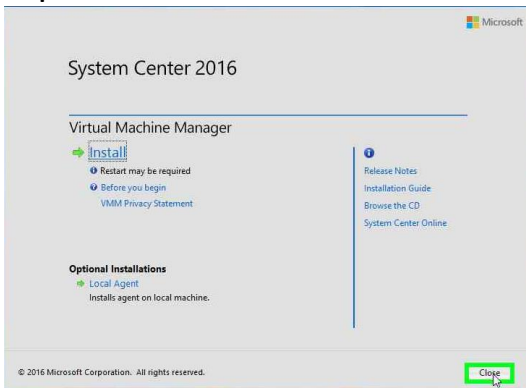
### Step 15 Click on "Install"



### Step 16 Click on "Close"

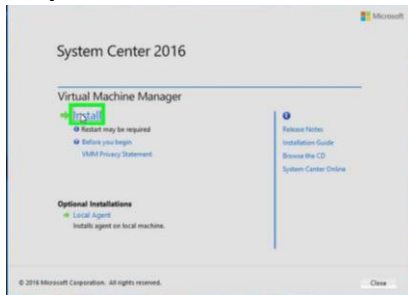


### Step 17 Click on "Close"

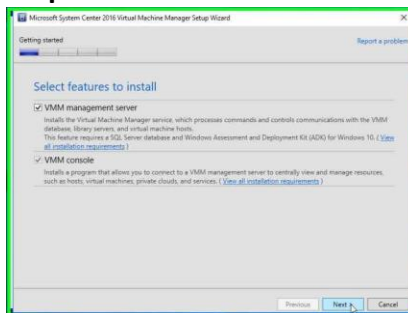


## SCVMM Second Server

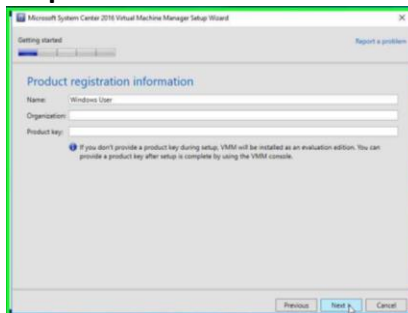
### Step 1 Click on "Install" in "Virtual Machine Manager Setup Launch Screen"



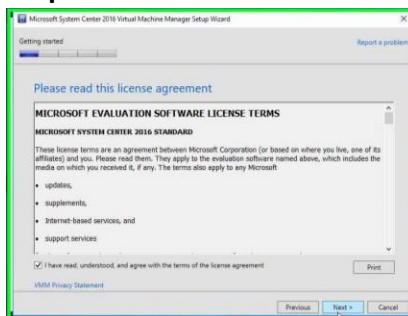
### Step 2 Select both the features and click on "Next"



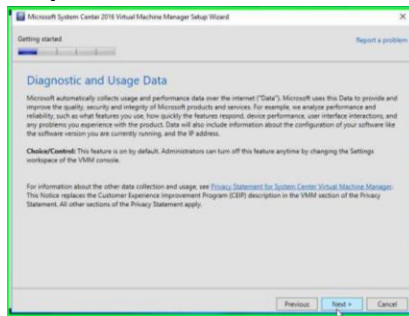
### Step 3 Click on "Next"



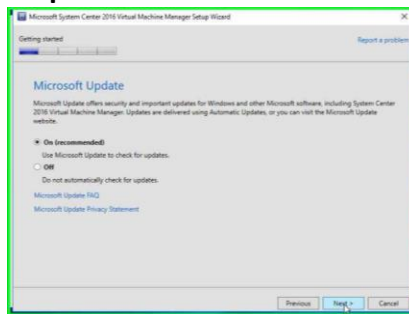
### Step 4 Click on "Next"



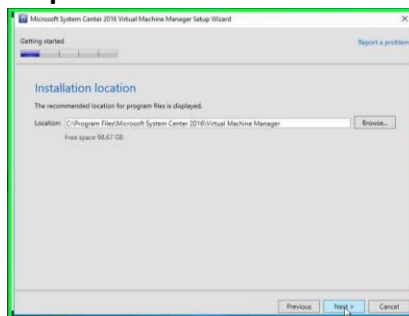
## Step 5 Click on "Next"



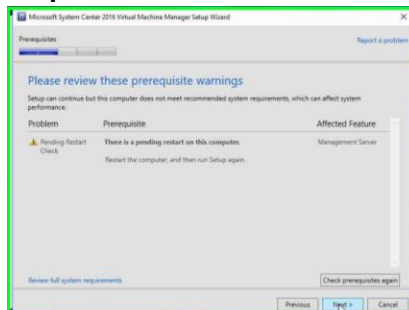
## Step 6 Click on "Next"



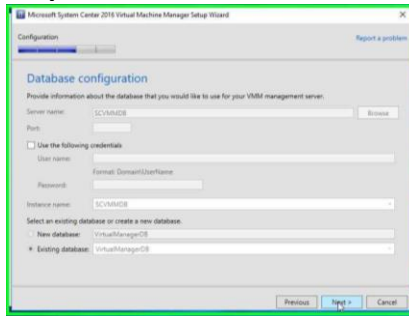
## Step 7 Click on "Next"



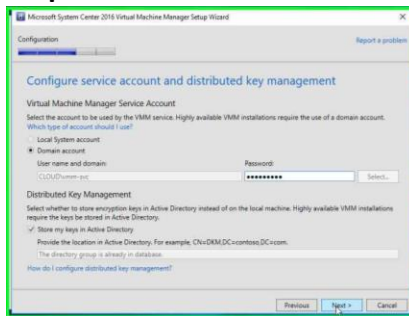
## Step 8 Click on "Next"



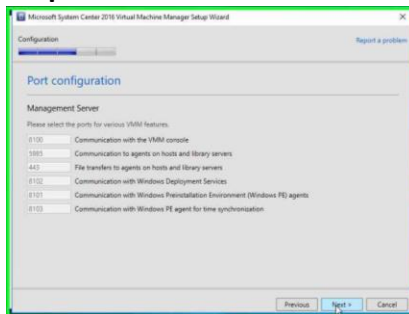
## Step 9 Click on "Next"



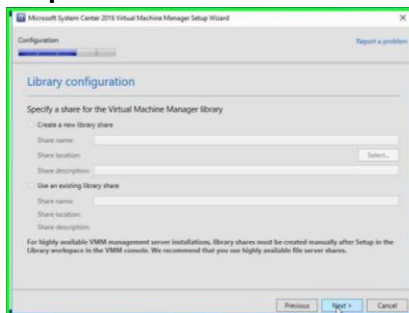
## Step 10 Click on "Next"



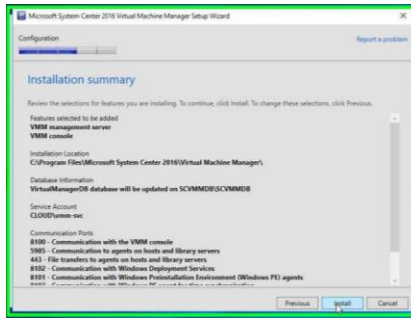
## Step 11 Click on "Next"



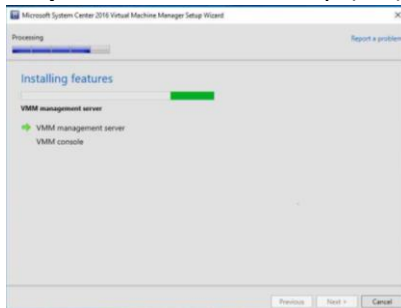
## Step 12 Click on "Next"



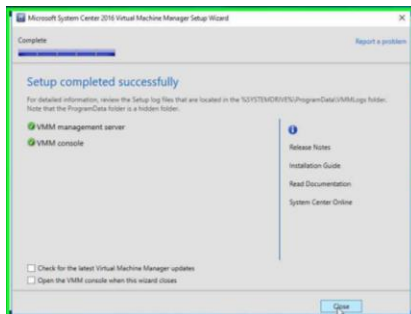
### Step 13 Click on "Install"



### Step 14 Click on "Desktop (list)" in "Program Manager"



### Step 15 Click on "Close" in "Microsoft System Center 2016 Virtual Machine Manager Setup Wizard"



### Step 16 Click on "Close" in "Virtual Machine Manager Setup Launch Screen"

