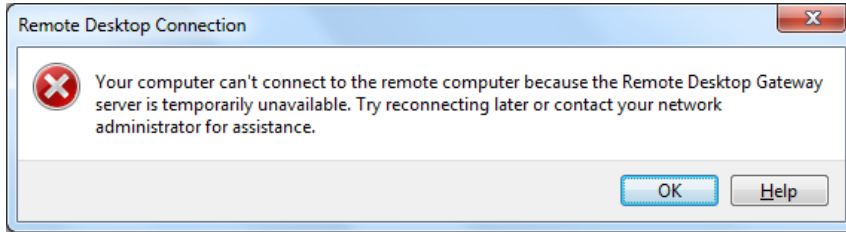
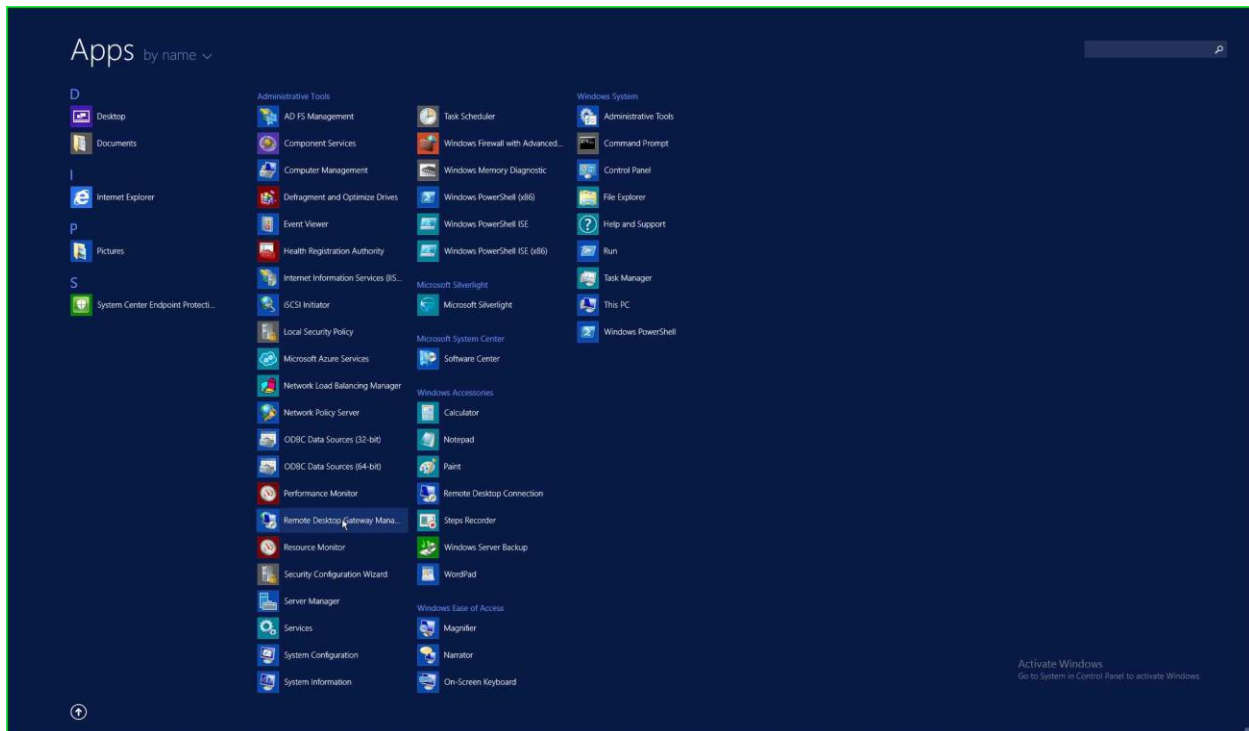


After configuring a new Azure Portal Subscription in our Private Cloud for one customer. Upon accessing the VM through Remote Desktop console, the below error appeared:

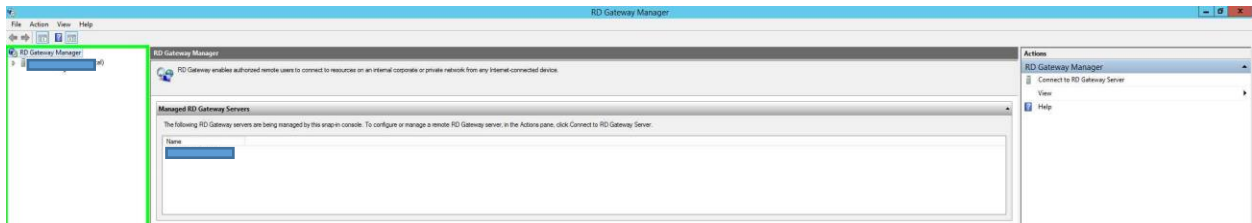


Recently we had renewed the certificate for Azure services, but somehow missed to import the certificate in RDS Gateway Server, below is the process to do the same:

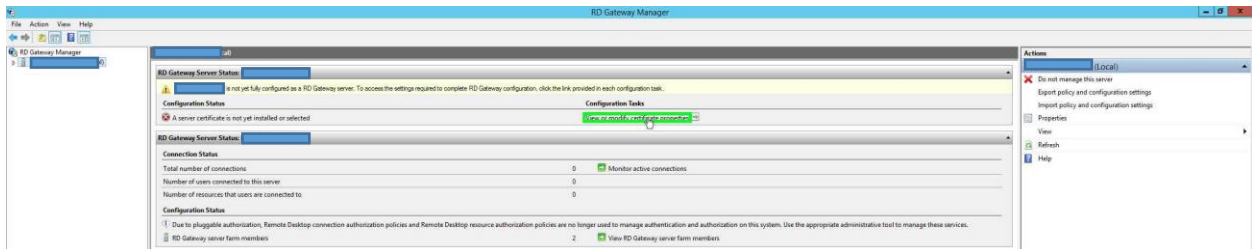
Step 1: Open "Remote Desktop Gateway Manager" in "Start menu"



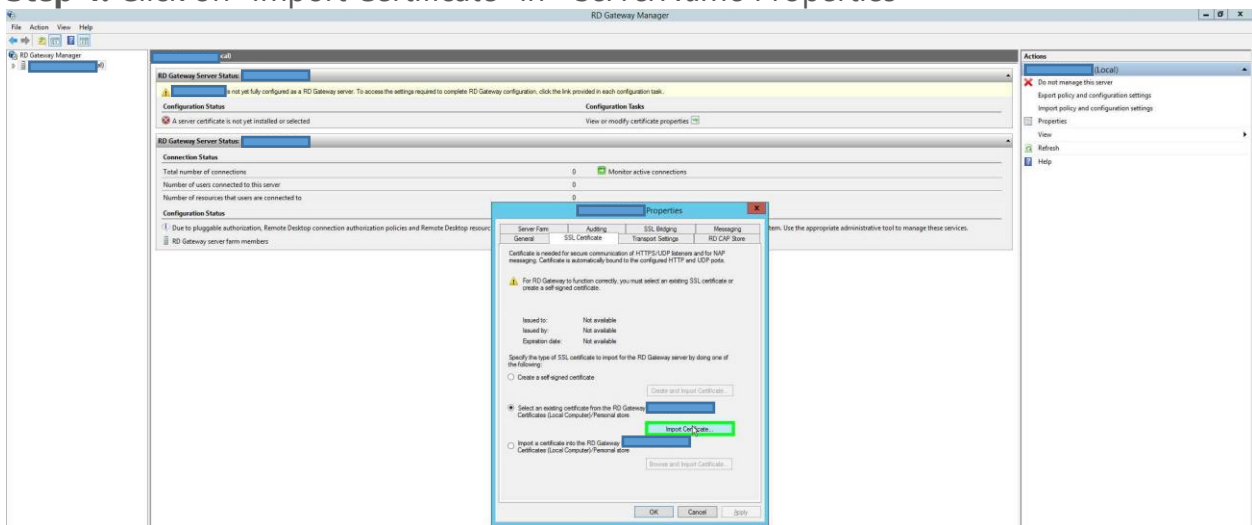
Step 2: User left click on "ServerName" in "RD Gateway Manager"



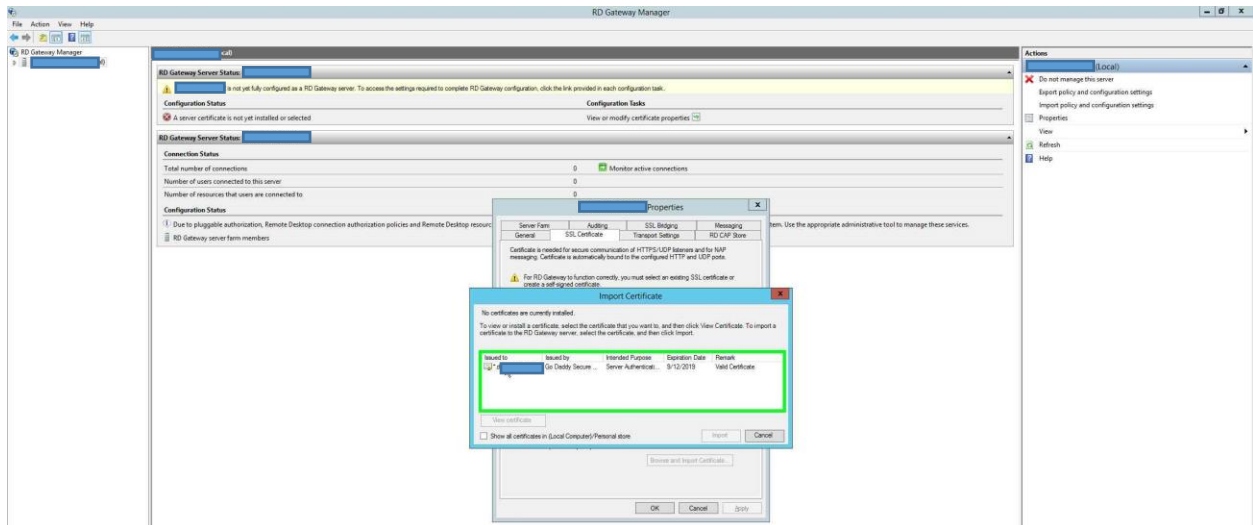
Step 3: Click in "RD Gateway Manager"



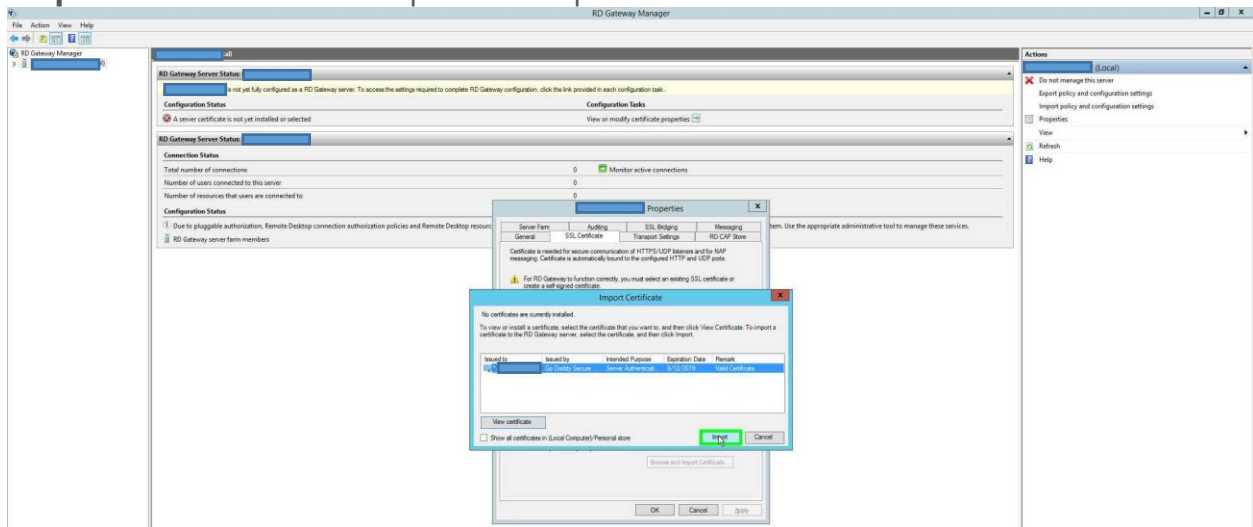
Step 4: Click on "Import Certificate" in "ServerName Properties"



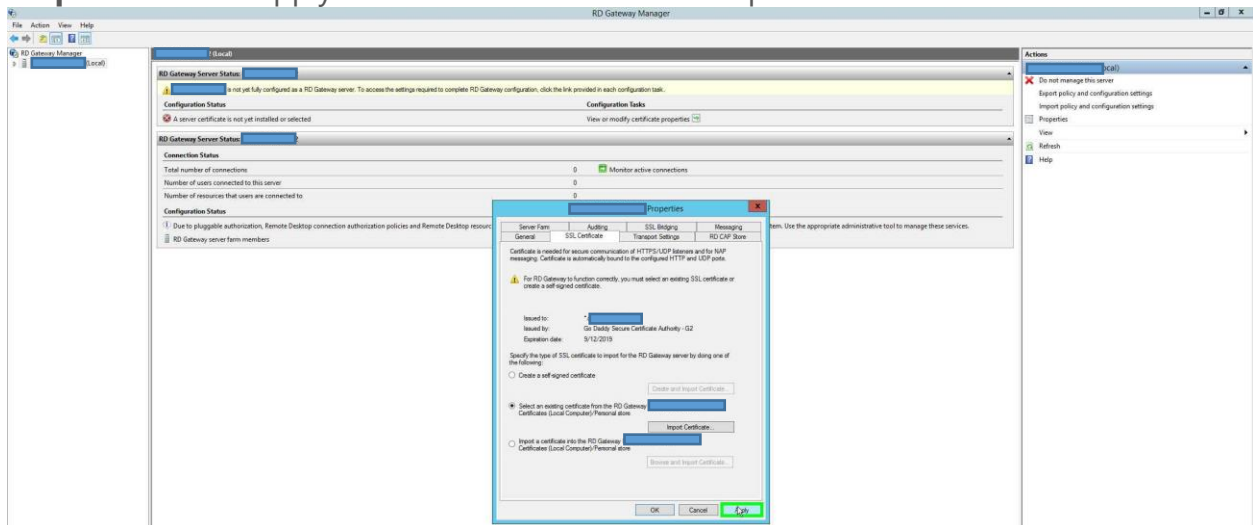
Step 5: Click on "*.domainname.com" in "Import Certificate"



Step 6: User left click on "Import" in "Import Certificate"



Step 7: Click on "Apply and Ok" in " ServerName Properties"



Step 8: Error is disappeared and User can login into his VM from Console using Azure Portal.

